



MAYBEE SOCIETY

Communicator

FEBRUARY 1997

ISSUE 33

MABEY SOMETIMES MAUTEBY

Governor Charles Rendell Mabey of Utah, wrote a history of his father's family entitled *Our Father's House*. It contains 343 pages, and was privately published in 1947. Most of it is family history, but there is also some genealogy showing his line. He tells us that among his father's papers (Joseph Thomas Mabey born June 30, 1845, at Wraxall, Dorset, England) was a letter written to him by George D. Kirby, a professional genealogist dated Sep. 7, 1930. In it Mr. Kirby reports that he has found no connection for him, but has uncovered a "Mabey" line which contains 26 generations. He also states that the line goes from Alice Mabie who married Joseph H. Tyrrell and can be traced back to the Earls and Dukes of Richmond. It is very bare-boned information, and is about all that we knew about the Mautebys.

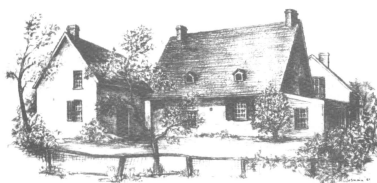
Recently, we have had the pleasure of communicating with several members of the Mabey branch of the family because of our new member, Ross Mabey, #202, of Adelaide, Australia. One of these contacts is Colin G. Mabey of Tunbridge Wells, Kent, England. Colin's family has lived in the London area and the South of England from 1800 until the present day. Before that time they were located in Leicestershire and Northants, to where they migrated from the Norfolk village of Mautby (pronounced Mawby). Colin, therefore, believes that some of the families with the names of Mawbey, Mawby and Mabey may be related. He has been engaged in research for the past 30 years.

GROWING, GROWING, GROWING

When George Maybee Martin first persuaded me that we should start the Maybee Society, I knew of very few Maybees. I thought that at most we would have twenty members and the task, though awesome, seemed possible. We are now over eight years old and we have 200 members. I communicate with Maybees of all spellings in Australia, Canada, England, Germany, New Zealand and the United States. The task is

still awesome, but, with so much enthusiasm and support it has become possible.

GREAT NEWS FOR THE MABEE FARM



Matching grants were announced by Governor George Pataki, Monday, January 6, 1997, for the "Capital Region" of New York. Included in the grants was one in the amount of \$50,000 for repair work at the Mabee Farm.

"We're delighted, of course," said Derek Sayers, co-chairman of the Schenectady County Historical Society's Mabee Farm Committee. Sayers said the society will use the money for restoration work on the 300 year-old farm, which includes a farmhouse, a small slave house and a little inn. "Much of the work is urgent," he said. "The work has all been discussed and fully planned for," Sayers said."

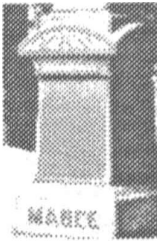
The above information from the *Gazette* of Schenectady was shared with us by De Brenner, #101.

A FREQUENTLY ASKED QUESTION

We often have members ask, "Do I owe dues." The answer is "Yes" if you have not paid membership or dues since the first month of 1996. Rather than paying on the anniversary of the day you joined the Maybee Society, we ask you to pay \$10.00 at the beginning of each year.

We would appreciate your notifying us if you no longer desire to be a member and receive this newsletter. This will save the cost of printing and mailing for those who have no further interest. We must admit we do not want to lose you, and if you feel like you must discontinue for financial reasons, but still would like to remain a member, please let us know as we will try and make other arrangements.

Belva Maybee Perry.



CAST IN STONE

Cindy Bryant has sent us the following burials from *Kinship* of 1990, prepared by Diane Snyder Ptak:

MABEY CEMETERY - In the Village of Westerlo.

Cemetery is 800 ft. South of Route 403 and 50 feet West of Maple Ave.

NAME		BIRTH	DEATH
AGE			
EVERY	Sarah	7/27/1767	1/2/1805 38y
BISHOP	James	8/11/1851	85y
CLARK	N.	3/ /1797	
HILL	David M.	11/7/1863	72y
MABEY	Cemantha	8/11/1865	50y
	Child	no dates	
	Daniel	9/11/1877	49-0-7
	Daniel G.	2/7/1870	78y
	George L.	4/30/1852	19y
	Helen M.	11/30/1875	22-9-12
	(Dau. of Daniel &Phebe)		
MABY	Lois	4/23/1848	77-3-10
	(Wife of Solomon)		
MABEY	Martha	11/20/1872	70y 3m
	(Wife of Daniel G.)		
MAYBE	Mary	11/20/1862	2y 10m
MABEY	Mary J.	2/24/1869	4y 9m
	Phebe	1/15/1800	11y
	(Daughter of Solomon & Rosannah		
	Phebe A.	8/18/1833	22y
	(Daughter of Solomon & Lois		
	Rosannah	2/18/1806	
	(Wife of Solomon)		
	S.	no dates	36y
MABY	Solomon	12/18/1850	86y
MABEY	Walter S.	4/17/1870	14-0-2
SCHEAFE	Mayeyam	1795	
	(Daughter of S.H.)		
TOMPKINS	Anna M.	7/9/1861	34-9-7
	Helen M.	no dates	3-9-7
MABEY	Wm. N.	6/14/1860	62-1-21

MANNING AVE. CEMETERY = MABEYS

Nancy Pietruszka, #191, writes that the Manning Cemetery, Butler, Morris New Jersey, is also a Mabey burial ground.

A "MUST SEE" LIST

Help us compile a "must see" list for members of the family who are traveling. For instance:

- Schenectady County Historical Society, 32 Washington Ave., Schenectady, N.Y., 12305-1601

- Nieuw House Country Loft, now a Bed and Breakfast, built about 1740, purchased by Peter Van Orden in 1790, on All Husen Road, New Paltz, New York.
- Maybee Society Office, 10020 23rd Dr. S.E., Everett, WA 98208.
- William Van Orden home in Nauvoo, Illinois - ask for directions at the Visitor's Center.
- The Mabee Farm in Rotterdam Junction, New York.
- Jeremiah Mabee Bed and Breakfast on Walworth St. in Delavan, Wisconsin.
- Quinte Branch of the Ontario Genealogical Society, Ameliasburg, Ontario, Canada, phone 613-967-6291.
- The Hamlet of Tappan, in Rockland County, New York and the Borough of Old Tappan in New Jersey, (its immediate twin just across the State Line) with their many historic buildings including The Old '76 House. To get there take the Palisades Interstate Parkway from George Washington Bridge. Get off at Exit 5, and proceed along South 303 to Oak Tree Road, where a right turn will take you into the hamlet. A short drive down Old Tappan Road will get you into that neighboring New Jersey borough.

DOUG, TOBIAS AND JOHN

Douglas C. Mabee, #177, continues to send us disks of inestimable worth on the Canadian branches of the family. I was therefore surprised to learn of just some of many his activities. He wrote, "I have been rather heavily involved in further Maybee/Mabee research at various archives, and visiting and communicating with several stimulating people from the large Mabee/Maybee community around Toronto and keeping healthy with a balance of tennis, weights and curling. There is no doubt that retirement is a marvelous time of life with the freedom and opportunity to follow the many roads not yet traveled. My latest focus has been further information about Tobias Maybee the ancestor of perhaps one of the largest branches of family here in Southern Ontario. Since he was one of the 'Later Loyalists', and took up land in 1793 among the many United Empire Loyalists, it is not surprising that he kept a rather low profile. On a tip from Jarvis Stoddart and his niece, Margaret McCurdie, I have searched through the preparatory notes (in the Ontario Archives) of Dr. William Canniff as he researched local history for his "A History of the Early Settlements of Upper Canada" which was published in 1869. Sure enough, John Way Maybee, (eldest son of Tobias) and his wife, Martha McArthur, gave extensive oral history to Canniff in an interview in 1864 all about their memories of people, culture and 'happenings' in the Belleville region (Bay of Quinte), Ontario. There are many glimpses into pioneering life in this region before 1790 and several important genealogical references such as "father (Tobias) from Fishkill, Dutchess Co., New York, 'married in 1808 by a squire (magistrate)' since there were no 'ministers within 18 miles.'" Doug also enclosed historical chronologies of Tobias Maybee and his son John Way Maybee.

EARLY ENVIRONMENT

George O. Zabriskie described early life in America in his book *The Zabriskie Family*. The Zabriskies and the Mabies intermarried many times. Perhaps the first marriage of the two families was the marriage, in 1712, of Joost Zabriskie, son of Albrecht Zabriskie and Machtelt Vanderlinde, to Christina Mabie, daughter of Caspar Pieterszen Mabie and Elizabeth Schuerman. Another early intermarriage was that of Christina Zabriskie, daughter of Jan Zabriskie and Elizabeth Romeyn, in 1730, to Jacobus van Orden, son of Wessel van Orden and Jacomyntje van Couenhoven.

"On 3 Sep. 1609, Hendrick Hudson, an Englishman in the employ of the Dutch East India Company, sailed into New York Bay on the ship 'de Halve Maen'. Thus began the history of New Netherland. Soon the Dutch were establishing settlements along the Hudson River, one in 1624 on the southern tip of Manhattan. {This is of particular interest to our family as Pieter Casparszen (van Naerden) was aboard the ship, *the New Netherland* which brought settlers to that area}. This became the chief settlement of the area and was called, New Amsterdam. It was to this port that new arrivals came and where most of the early New Jersey Dutch settlers first lived, that is, either on Manhattan proper or in the five nearby Dutch towns on Long Island (all within the present day Brooklyn)"

"The first Dutch settlers of New Jersey came to the west side of the Hudson across from New Amsterdam in the 1630's, but the first real village, Bergen (now Jersey City), was not established until 1660. From this Jersey City base, settlers moved up the Hackensack and Passaic River valleys. Soon several settlements (e.g. Ackinsack, Acquackanonk, and Second River) were established."

"The Dutch lost control of New Netherland to the English in 1664, except for a short period in 1675 when the Dutch regained control. New Netherland was divided by the English into two or really three separate colonies, New York, East Jersey, and West Jersey. Later East and West Jersey were combined as New Jersey. So, we may say for practical purposes, the political history of New Jersey began under the English and not the Dutch. However, Bergen County remained Dutch in the sense that most of the citizens were of Dutch extraction or at least under Dutch influence. Bergen County place names, roads, villages etc. were predominantly Dutch (or Indian) as were the churches. This Dutch 'flavor' remained for many years."

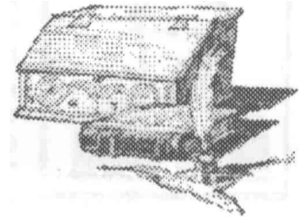


"The earliest houses in Bergen were temporary shelters, either as dugouts or crudely built houses. The first permanent houses were built of stone or wood, one story with straw thatched roofs. Later there was developed the 'Dutch Colonial House,' which was one and a half stories. The average Dutch farmhouse of Bergen County was erected by the owner with the help of his wife, grown sons and

neighboring farmers, sometimes under the supervision of a local carpenter. Where slaves were present, these houses became more substantial in size and the stones were more carefully cut."

"The kitchen with its large fireplace was the gathering place of the family at all times. The bedrooms were in the half-story, often open, attic. The earlier attics had windows only in the gable ends. Later came dormers. Windows of the main floor were usually small; the outside doors were divided to provide ventilation when the upper half was open; and the lower half closed to keep out the chickens and pigs, and no doubt to keep the toddlers in".

"A word or two about furnishings: In the ordinary home there were few, if any, 'luxury' items such as pictures, carpets, mirrors and clocks. Furniture was limited to essentials such as beds, chests, tables, chairs, 'settles' (a long wooden bench with a back, arm rests, and sometimes a chest beneath the seat), spinning wheels and cradles. Dishes were usually of pewter or earthenware, very little chinaware."



"As to early Dutch American dress, women wore many petticoats under a full skirt, gathered at the waist. Sleeves were tight and elbow high. A white kerchief, folded in a triangle, was used to dress the shoulders. Linen caps were worn. Men wore billowing knee britches. Shoes were wooden, except on Sunday when leather shoes were often worn."

George also shared a first hand account of life among the early settlers, "Mr. Thomas Rudyard, Deputy Governor of the Province of New Jersey 1682-1683, described the life of the few inhabitants then living in the area of old Aquackanonk in a report to the twelve proprietors of East Jersey. Rudyard stated that the people were generally sober, industrious and professing Christianity, wise in their generation, courteous in their behavior and respectful to those in office."

"Pork and beef were selling at two cents a pound, fish and fowl were plentiful. Wheat sold for four shillings and Indian wheat for two shillings and six pence a bushel. There was cider a-plenty which sold for one penny a quart and 'a good drink made of water and molasses for about two shillings a barrel as wholesome as your eight shillings beer in England'. There was to be had good venison at eighteen cents per quarter, eggs at 3 pence a dozen. Grapes, walnuts, peaches, strawberries and many other things were plentiful in the woods nearby."

"The richer farmers, who settled hereabouts, kept from eight to ten servants each, both men and women. Each farmer kept from ten to thirty cows, several oxen and a large number of horses which were allowed to scatter about the country during the summer. Only those which were required for farm work were kept in their stables. Great herds of swine roamed in the woods although the flocks of sheep were usually kept near the farmyards due to the wolves which frequented the woods which had a plentiful supply of oak, chestnut, walnut, ash, poplar, fir and red cedar."

"The soil hereabouts was fertile which produced plentiful crops including good flax and hemp which were spun and manufactured into cloth. The country is well stocked with deer, conies (rabbits), and wild fowl of various sorts. There is an abundance of wild turkeys, pigeons, partridges, plover, quail, swans, geese and ducks."

**OFFICE OF THE CLERK OF THE CIRCUIT COURT
DAVID C. MABIE**



From the home page of the Office of the Clerk of the Court, Prince Williams, Virginia, we read, "The mission of the Clerk of the Court is to provide professional, judicial and administrative services to the citizens of Prince William County, Manassas and Manassas Park, Virginia. The Clerk's office

is divided into six sections; Land Records, Court Administration, Executive Administration, Public Service, Dispute resolution, and the Law Library.

As Clerk, Dave Mabie has instituted Dispute Resolution in the court system to reduce the financial and emotional cost on individuals involved in child custody and other family related disputes.

Clerk Dave Mabie and two members of his staff also perform marriages at the courthouse in English and Spanish for couples with licenses issued by the Public Services Section."

QUINTE BRANCH GENEALOGICAL SOCIETY

The Quinte Branch was chartered by the Ontario Genealogical Society as its 18th branch on June 14, 1980. It covers the Bay of Quinte area, specifically the counties of Hastings and Prince Edward. On August 1, 1994, it moved into the Marilyn Adams Genealogy Research Centre in Ameliasburg. The centre was built by the 7th Town Historical Society with a bequest by the late Marilyn Adams, a retired teacher and resident of Ameliasburg Township. The bequest required that a Genealogical Research Centre be established by 7th Town. Quinte branch was invited to establish the research library at the Centre. The Centre is totally dedicated to Genealogical research.. They hold hundreds of family histories and their cemetery listings include most of Prince Edward, Hastings and Eastern Northumberland Counties. Other holdings include Newsletters from a wide range of Genealogical Societies, maps, texts, bibles, pictures, clippings, etc. They also have various census records on microfilm and microfiche. They have publications for sale. For a catalog, send four first class Canadian stamps or \$2.00 US funds.

The Branch library has been growing rapidly since their move and they request copies of any family histories, pictures, excerpts from family bibles and other genealogical material, that you might wish to deposit. Volunteers are needed to input material. The work can be typed into your home computer and then transferred to them. You also are invited

to contribute to a fund to enable them to have the "Family Search" from the Church of Jesus Christ of Latter-day Saints. If you would like to help or receive their catalog make you check payable to:

ONTARIO GENEALOGICAL SOCIETY
and send to:
QUINTE BRANCH OF THE O.G.S.
PO BOX 35
AMELIASBURG, ONTARIO
K0K 1A0, CANADA

**CAPTAIN ABRAHAM MAYBEE'S DESCENDANTS
GATHER**

Rodney Green, member #146, librarian at the Quinte Branch of the Ontario Genealogical Society writes, "This past summer, Maybee relations from the USA and their hosts who are descendants of Captain Abraham Maybee, were visitors at the Centre."

DUCKING HURRICANES

Patricia Mabie Magette, #91, reports, "We were blessed at our beach property with minimal damage when 3 hurricanes visited our shore at the mouth of Cape Fear River, Caswell Beach, North Carolina. We housed many in our Red Cross shelter here in Ahoskie. Our daughter and son-in-law had a tree through the roof, like at least 25% of folks in Raleigh, North Carolina. Repairs are still under way."

WHAT EPHRAIM MAYBEE DID IN HIS SPARE TIME



"Over 15 years ago I was fortunate to be able to photograph a 'tintype' of Ephraim Maybee, taken originally in the 1860's or 1870's. A son of Peter Maybee and Catherine Huff, he was born about 1809, and died after 1872. His grandfather was Captain Abraham Maybee UE of Adolphustown. He married Katie Gunter who died in 1852, and later Jane Powers. Many of his descendants still reside in Murray Twp., Northumberland Co., Ontario, where he

lived."

"During the March school break, we were able to spend some time in the township, and I had a chance to visit Franck Lodge #127, a Masonic Lodge in Frankford, Ontario, quite close to Murray Township. This particular lodge has been operating for 136 years, and the 1860 charter is displayed on the wall. Among the Masons whose names appear on it is that of Ephraim Maybee. Having had no idea that he was a Mason, this was a bit of a surprise. Best of all, I have since been able to present Franck Lodge with a copy of Ephraim Maybee's photo for their archival display."

"Now I am wondering if some of Ephraim Maybee's brothers were also Masons, especially his brother, William, my ancestor. It's a question worth exploring."

by Peter W. Johnson UE

WILLIAM JEROME CROFF
1924-1996

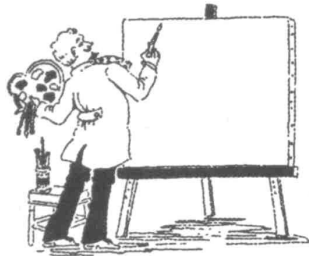


We are indebted to Donald R. Acheson for the information about his uncle, William J. Croff, #132. William, a resident of the Lake Placid Health Center in Lake Placid, NY had previously been a resident of Okeechobee, Florida since 1990.

William J. Croff was born August 3, 1924, in Flint, Michigan. His great-great grandfather, William Compton of Yorkshire, England, married Betsey Maybee on March 12, 1792. She was born in Belleville, Ontario, Canada. Their children were born in the United States and William's family lived in Michigan.

At the age of 12 William was awarded an art scholarship to the Flint Institute of Arts where he studied drawing and painting with Jaroslav Brozik and L. Dirk Van Dyke.

At the age of 15 he won prizes in local and national art competitions. He graduated from Flint Central High School and continued his studies at the Kansas City Art Institute where, after earning a four year diploma in painting, he received a Bachelor of Fine



Arts degree, studying with Ross Braught and Wallace Rosenbauer. He also studied at the University of Buffalo with water colorist, Charles Burchfield. At the Art Students League of New York, he was a student under Edward Dickinson, Jon Corbino, Morris Kantor and Yasuo Kuniyoshi. His studies continued at Michigan State University, Fairleigh Dickinson University and The National Technical Institute, the School of Painting and Sculpture. The last two schools are located in Mexico City. While he was a student in Mexico he became acquainted with the Mexican Muralists Diego Rivera and David Siqueiros. While there he also spent much time with the Mexican landscape painter, Dr. Atl. Mr. Croff completed graduate work in school administration, supervision, and curriculum development at Kutztown State College, Peterson State College, and received his Master of Education degree in Art Education from Pennsylvania State University at Indiana. Mr. Croff started his teaching career in Flint, Michigan, later moving to Michigan State Boy's Vocational School. Three years later he accepted a teaching position at Hampstead Hill Junior High School, the largest Junior High School in Baltimore. He taught art, civics, geography and history before becoming head of the art department. He also taught at Washington School and Honiss Schools in Dumont. While Art Coordinator at Honiss School he was elected to membership in an international graduate fraternity of men in the field of education. Membership is by invitation only.

A professional artist, he was president of the North Hudson Art League. Members of this non-profit organization raised funds to build an art museum in North Bergen, New Jersey, known as the Titus Museum of Art. He was a member of the Art in Education Association, the Institute for the Study of Art in Education, the Association for Supervision and Curriculum Development, Kappa Delta Pi Undergraduate Honor Society in Education and Montclair State College Chapter of Phi Delta Kappa He was the recipient of the Kent State University's Research Center Scholarship in 1972 for the Study of Socialistic Education which was held in the Soviet Union.



During World War II he served in the U.S. Navy as a Petty officer in charge of a gun crew. He saw action in the South Pacific and in the North Atlantic.

The ship in which he served took a direct hit while supporting the Battle of the Bulge and he survived a German torpedo boat attack in the English Channel.

He was preceded in death by his mother, Edna Compton Croff; and is survived by one sister, a niece and three nephews as well as many dear friends. No immediate services were held, but a memorial service will be conducted in the spring of 1997 at the Bird Cemetery in Elba, Michigan.

**JAN MABIE AND DOROTHEA PICKERT /PIKKERT/
 PICKARD**

Marilyn Ford Anderson, #31, is updating her "Pickard" book. She needs information on Jan and Dorothy (Pickard) Mabie's family as well as anyone connected to Bartholomew Pickard's family. Please write her:

MARILYN FORD ANDERSON
 4005 SAGER RD.
 SINCLAIRVILLE, NY 14782-9644
 PHONE: 1-716-962-9043

**TERRY MAYBEE ELECTED ROCK COUNTY
 CHAIRMAN**

From an article by Kelley Flury, daily staff writer of the *Beloit Daily News*, on April 17, 1996, we learn that Terry Maybee was elected Rock County Chairman. "Supervisor Terry Maybee of Janesville was elected chairman of the Rock County Board Tuesday, defeating Lynette Kepplinger of Beloit 16-11. Maybee replaces a twelve year chairman Donald Upson. ..."

"Maybee is a lieutenant in the Janesville Fire Department. He has worked for the department since 1967. He has served on the County Board three times for three different districts in Janesville, beginning in 1984. His latest term started in August when he was appointed to replace Ilah Hartung, representing Janesville's 3rd and 4th wards. He also served on the Blackhawk Technical College Board of Directors."

REUNIONS

Several reunions are planned for members of the Clan.:

On Saturday, March 8, 1997, there will be a reunion at the Kingsway Country Club, Port Charlotte, Florida (located between Sarasota and Fort Meyers). If you think you may be able to attend, contact De Brenner, #101, or our President John A. "Jack" Maybee:

DELORES BRENNER #101
96 HIBISCUS DRIVE
PUNTAGORDA, FLORIDA 33950
PHONE: 813-639-5996

JOHN & MARY ELLEN MAYBEE #58
100 CLYDE LANE, APT. 106
DUNDEDIN, FLORIDA 34698-5909
PHONE 813-736-5593

There will be a family reunion at the Mabee Farm in Rotterdam Junction, NY, this summer on July 19 & 20, 1997. For more information contact David "Wayne" Maybee, #134, or Kim & Gary Mabee, #78.

WAYNE MABIE #134
95 WEST SIDE DR. R.D 3
BALLSTON LAKE, NY. 12019
PHONE: 518-399-5779

KIM & GARY MABEE #78
15 VAN BUREN LANE, RD 4
SCOTIA, NEW YORK 12302-9473
PHONE: 518-370-4954

Sharon Sova shared news from Mr. Gordon Yadon, the town historian of Delavan, Wisconsin. "The year 1997 will have noteworthy local historical significance since it marks the 150th anniversary of the Mabee Brothers' arrival in Delavan. To commemorate the occasion, we plan to have a circus for a two-day appearance this summer, conducted cemetery tour and a feature article in the local paper on the Mabee Brothers."

ON THE WEB

Frances I. Hindmarsh, #160, has spent many long hours in preparing a book on the Van Patter (Patten) Family of Elgin Co., Ontario, Canada. We were, therefore, delighted to find the first two generations on the Internet and available for searching. We appreciate Frances' generosity in sharing that information with the rest of the world.

If you have not yet taken the opportunity, be sure to visit Cindy Bryant's home pages with the Mabee, Koutz and Christlieb families at <http://www.qtm.net/~cbryant/>

PRESS RELEASE SECTION (An announcement from the Internet)

ACQUISITION OF GRANT OIL AND GAS CORPORATION

"Tulsa, Oklahoma: July 15, 1996, Lone Wolf Exploration, Inc. today announced the signing of a letter of intent to acquire Grant Oil & Gas Corporation in exchange for 3,500,000 shares of restricted common stock of Lone Wolf."

"The acquisition of Grant brings to Lone Wolf a seasoned management team with over 100 years of experience in the petroleum industry as well as proved producing reserves valued in excess of \$10 million. James G. Borem, President and Chief Operating Officer, of Grant will assume the same position with Lone Wolf and will be responsible for current operations and for the addition of reserves. "We plan to increase the reserves of Lone Wolf to \$100 million within 24 months," said Borem.

"According to **Gifford Mabee**, "This acquisition combines the public market and financing ability of Lone Wolf with the petroleum industry expertise represented by the management of Grant." Mabee will continue with the Company as Chairman and will be responsible for equity funding and investor relations. Lone Wolf is planning an Initial Public Offering in late 1996 or early 1997 at a target price of \$5.00 per share."

SOMETIMES I WISH I WAS FROM LA SALLE COUNTY, ILLINOIS

Heritage Books Inc. has selected books, that were previously published, which they consider to still be of unusual worth to readers today. These books, are then reprinted and referred to as Heritage Classics. One book that has earned this honor is the book *The History of La Salle County Illinois* by Elmer Baldwin (originally published in 1877). The book does far more than give the lineal history of the area. Although it does report the happenings from the times of the mound builders until 1840, it also tells of the natural history, geology, and biology. There is information on schools, taxes, churches, population, government, amusements, illnesses, criminals and more. It then reports on the pioneer settlers in each community, often giving not only biographies and nativity, but thoughts and feelings of those pioneers. It is hard to believe that a of 573 page volume (including maps, illustration and index) could so well cover such a variety of ideas. If you are interested in the book, it is Book number B044 (paper-back); the cost is \$37.50 plus \$4.00 shipping and handling, U.S. They will accept Visa, MasterCard, Checks or Money Orders.

You may order it from:

HERITAGE BOOKS, INC.
1540 E. POINTER RIDGE PL., SUITE 300
BOWIE, MD 20716

GEN-WEB GROWING IN MICHIGAN

Cindy Bryant reports that the Gen_Web is really growing in Michigan. Ionia County and Montcalm County, Michigan, have new websites with generous archives to draw from in Ionia and Montcalm counties. Cindy Bryant, #49, has been drafted to enter biographies from the histories of those counties.

The websites are:

<http://www.rootsweb.com/~miionia>

<http://www.rootsweb.com/~mimontca>

MELVIN & GARLAND MAYBEE



Mel Maybee, #50, updated us on some of their activities. "GG has been very busy traveling with her Northern Gateway Branch of the Sweet Adelines. She is now their historian and has expended much time and effort in that endeavor. Her group also participated in the Pacific Shores Regional competition and came away with a bronze medal. Mel and GG also attended her 50th high school reunion this year. Among other projects, Mel has been busy moving boulders. They have 500 boulders just lining their circular driveway."

From Garland Maybee, "GG", we learn, "Remember as individuals there are no two of us alike (similarities, maybe) so; we are responsible for what we Do & Be."

CAN YOU HELP BILL?

William Mabie, #203, needs more information about Abel Fennel Mabie. Abel was born Oct. 16, 1833, in "Block Canada" and died Sep. 7, 1919, in Fond du Lac Co., Wisconsin. He was the son of Peter Mabie, born in N.Y., ca. 1800. and Ms. Fennel.

WILLIAM MABIE #203

6105 MT. ANGELUS DR.

LOS ANGELES, CALIFORNIA 90042

PHONE: 213-258-7472, FAX 213-258-7472

E-MAIL: ingitibu@aol.com

"Hey, what is block Canada?" bmp

UPDATE TO E-MAIL LIST

John & Shirley Weihing #138

jweihing@prairieweb.com

Bret Perry, #86

bretly@gte.net

Byron Perry, #83

retroboy1@juno.com

Sylvester Maxon Mabie, #110

74041,2720@COMPUSERVE.com

If you do not have Prodigy, use a period instead of a comma.

Scott L. Maybee, #70

wpfi@msn.com

NEW ADDRESS:

BRIAN & TAMMY BROWN #143

3400 FALL MEADOW, APT. 3209 A

DENTON, TEXAS, 76207

You can currently reach Tammy and Brian in Denton, Texas.

HAMILTON & MARGARET MABIE #32

108 GREENBRIAR TRAIL

STATESBORO, GEORGIA 30458

PHONE: 912-681-4191

After 32 years at the same home in Blacksburg, Virginia, Hamilton and Margaret have moved to Georgia.

DU TRIEUX NEWSLETTER

Connie Butterfield is no longer serving as editor for the Du Trieux newsletter. If you wish to contact them, write to:

SHARON A. TRUAX, CHAIRMAN

284 FOX STREET

LAPEER, MICHIGAN, 48446

NORMA R. MABIE DIES

Norma Mabie, wife of Kenneth A. Mabie, died Thursday, July 11, 1996, aged 76, after a long illness. Mrs. Mabie was born in New York City, and lived most of her life in the Slingerlands area. She was a graduate of Albany High School. For more than 50 years she was a bookkeeper for many companies in that area. She was last employed by McGrath Industries of Colonie, retiring in 1994. Norma was of the Lutheran faith. Survivors include her husband, Kenneth A. Mabie, whom she married in 1959, one son, William R. Leggett of East Berne; one daughter, Darlene Jerry, of Schenectady; four grandchildren and three great grandchildren. She was buried in the Fisher's Cemetery in Rotterdam, New York.

CONNECTICUT

From *Early records of Hartford Connecticut*, a CD distributed by Heritage Books, we learn that Maybees were in Connecticut as early as 1666. On page 49 of probate records we read:

"Maybee, Nicholas, Windsor. Buried 1 March 1666-7- (W. R) Invt. £4-12-08. Taken by Benedict Alverd, Wm. Phelps. Court record, page 70-8 October 1667: Adms. to James Enno."

WELCOME

DOUGLAS AND ELIZABETH MAYBEE #197
2 WINCHESTER PLACE
TRURO, NOVA SCOTIA
CANADA B2N 6M9

* Winter address is:
1112 W. BEACON RD, LOT 22
LAKELAND FLORIDA 33803

Douglas Carleton Maybee has many things in common with other members. He is one of many named Douglas, one of several Carletons, one of a large number of descendants of Captain Abraham Maybee and is one of the Snowbirds who fly to Florida each winter. Several of the family have already become acquainted with him at the reunions in Florida, and we now welcome him as a full-fledged member of the Maybee Society.

JEANINE MABIE #198
335 OXFORD DR.
LADSON, SO. CAROLINA 29456

Jeanine Mabie is the granddaughter of Sylvester M. Mabie, #110. He gave Jeanine her membership as a gift. She descends from Jeremiah Mabie, 1808-1877, and Lois Evans.

DANIEL & MARSHA K. MABIE #199
1007 HOLIDAY DR
WAUNAKEE, WI 53597

Daniel is a descendant of the Reverend Daniel Mabie. His brother and sister-in-law Douglas & Jennifer Maher Mabie, #192, extended membership to Daniel and Marsha Kinzer Mabie as a gift.

LTC ROGER M. ARENDSEE #200
10903 WHISPER RIDGE
SAN ANTONIO, TEXAS 78230
PHONE: 210-492-3143

Roger is another descendant of William Mabie and Sophia Scripture through Oscar Arba Mabie, son of James Dana Mabie. We are delighted to have him as our member #200.

FREDERICK CARLETON MAYBEE #201
RR#3 TRURO, NOVA SCOTIA
B2N 5B2 CANADA

Fred is the son of Douglas Carleton and Elizabeth Etter Maybee. He is actively entering into the computer information that his grandfather received from Royal A. Mabee.

ROSS MABEY #202
P.O. BOX 91
GLENSIDE, SOUTH AUSTRALIA
AUSTRALIA 5065
E-MAIL: rmabey@merlin.net.au

Ross has opened a whole new dimension for us. While looking for his Mabe family he has reached out all over the World by use of the Internet and has supplied us with significant information that we might not otherwise have had.

WILLIAM MABIE #203
6105 MT. ANGELUS DR.
LOS ANGELES, CALIFORNIA 90042
PHONE: 213-258-7472, FAX 213-258-7472
E-MAIL: ingitibu@aol.com

Bill writes that he has eight brothers and sisters, two sons and a dozen nieces and nephews, all interested in family history. He is Chief Aide to Senator Richard Polanco, 22nd District, of the California Legislature.

TODD TILLSON #204
% 603 ALTA DRIVE
BEVERLY HILLS, CALIFORNIA 90210

Tyrone Tillson gave a membership to his brother Todd for a birthday gift.

RICHARD & CARROLE MABIE #205
7123 189TH PL SW
LYNNWOOD, WASHINGTON 98036
PHONE: 206-774-5996

Ron Mabie, #67, of Pickstown, South Dakota, thought that his brother and sister-in-law in the state of Washington might enjoy a membership in the Maybee Society.

DOUG & SYL-VONNA MABIE #206
1328 DEERHURST DR.
RALEIGH, NORTH CAROLINA 27614
PHONE: 919-870-7391

Ron Mabie, #67, decided to share the family news with his brother and sister-in-law. We hope that they enjoy getting to know the family better.

MARJIE & ED PETERSON #207
1925 SKYLINE DRIVE
MINOT, NORTH DAKOTA 58703
PHONE: 701-852-2023

More new members are Marjie and Ed Peterson. She is a sister to Ron & Marietta Mabie, #67, Richard and Carrole Mabie, #205 and Doug and Syl-Vonna Mabie, #206.

THE COMMUNICATOR

A publication of the Maybee Society
Annual dues \$10

John Albert Maybee, President
607 Via Ponderosa
Schenectady, NY 12303 (518)355-6655

Winter address
100 Clyde Lane Apt. 106
Dundedin, FL 34698-5909 (813)736-5593

Belva Maybee Perry, Executive Secretary
Central Office
10020-23rd Dr. S.E.
Everett, WA 98208 (206)337-1369